

Nyman Supplemental Movies 1-4

Please see videos attached

Supplemental movie 1

Real-time 3-D (through-focus) filling pattern of the vascular tree after a bolus injection of rhodamine dextran

Supplemental movie 2

Single-plane time-series (black and white version) of same islet showing efferent flow in the large vessel captured in real-time

Supplemental movie 3

Real-time 3-D (through-focus) perfusion of rhodamine dextran in islet with “inner to outer” filling pattern

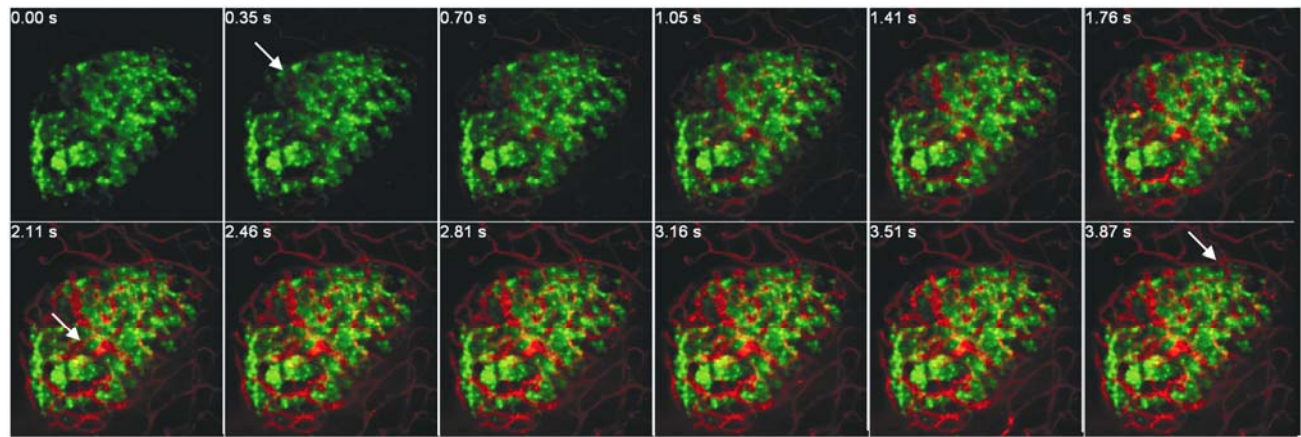
Supplemental movie 4

Through-focus projection time series showing real-time version of islet with “top to bottom” filling pattern

Nyman Supplemental Figure 1

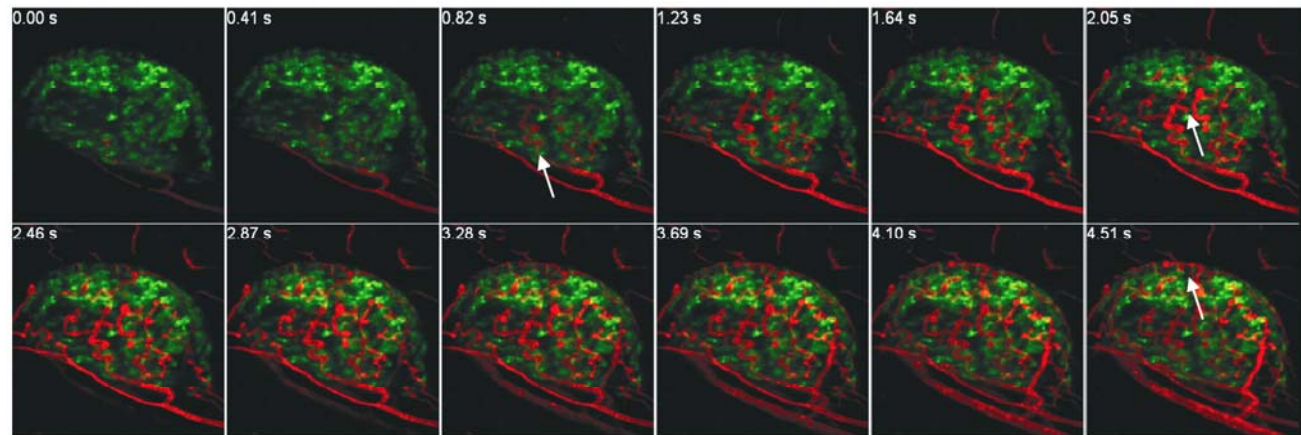
A.

Through-focus projections time series demonstrating "inner to outer" flow



B.

Through-focus projection time series demonstrating "top to bottom" flow



Supplemental figure 1

(A) Still version of through-focus projection time series showing islet with "inner to outer" filling pattern and (B) an islet with "top to bottom" filling pattern.